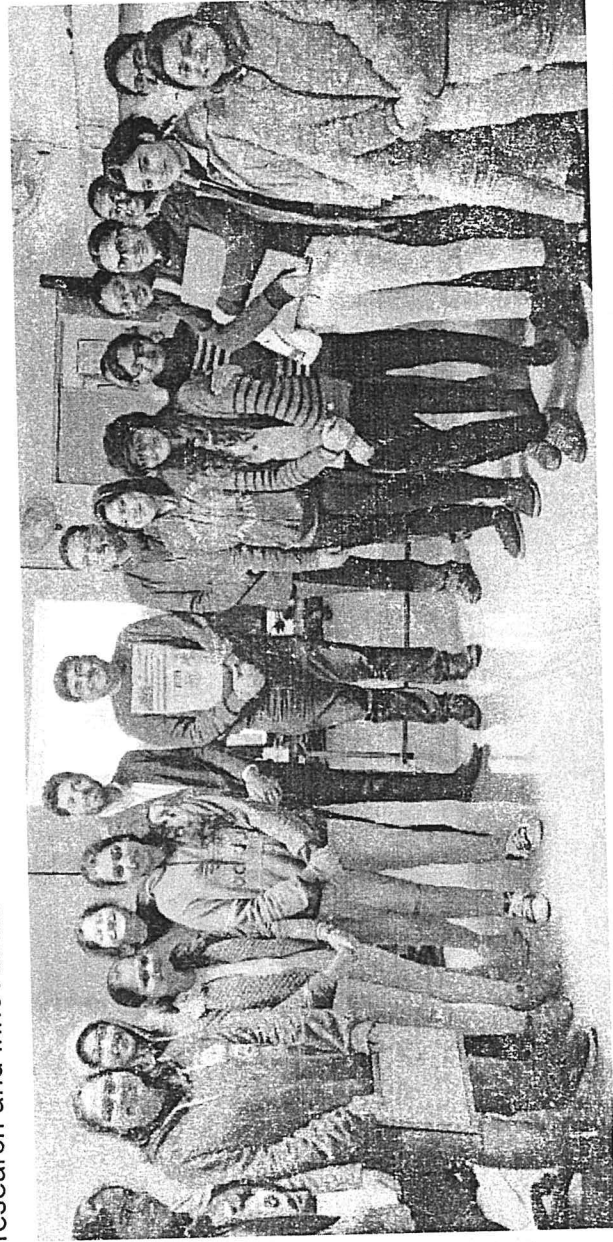


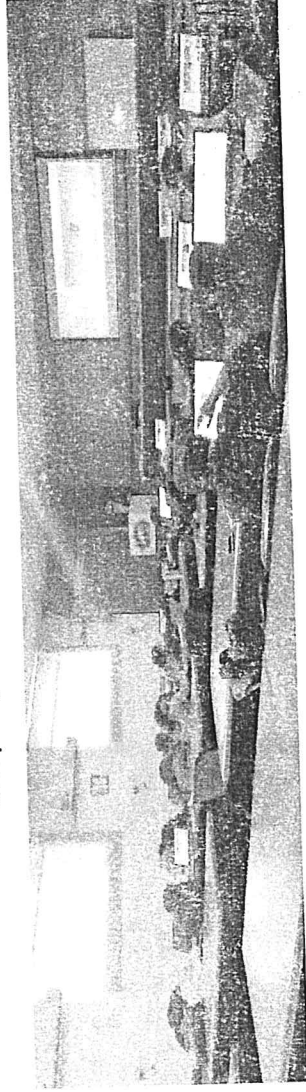
American Society of Mechanical Engineers (ASME) Chapter, IGDTUW

Faculty Advisor: Dr.V. K. Chawla

The American Society of Mechanical Engineers (ASME) Chapter in IGDTUW works to achieve the desired objectives of the popularization of the activities related to Mechanical Engineering and also facilitate practical knowledge and applicative thinking among the students of MAE. The Mechanical and Automation Engineering (MAE) students of IGDTUW are active members of ASME Chapter. The society conducts various events like software training workshops in collaboration with major training institutes of Delhi, various quizzes, induction programs for awareness of other national-international competitions and helps them in its preparation. The ASME is an organization that has a tremendous international outreach which helps benefit the University students as they can apply their practical and theoretical knowledge for research and innovation.



CAD workshop held in 13th January 2020- 15th January 2020, conducted by ASME Chapter, IGDTUW and attended by 25 students



ANSYS workshop held on 15th Feb 2020 to 17th Feb 2020, Aconducted by ASME Chapter, IGDTUW, and attended by 28 students.

Malika